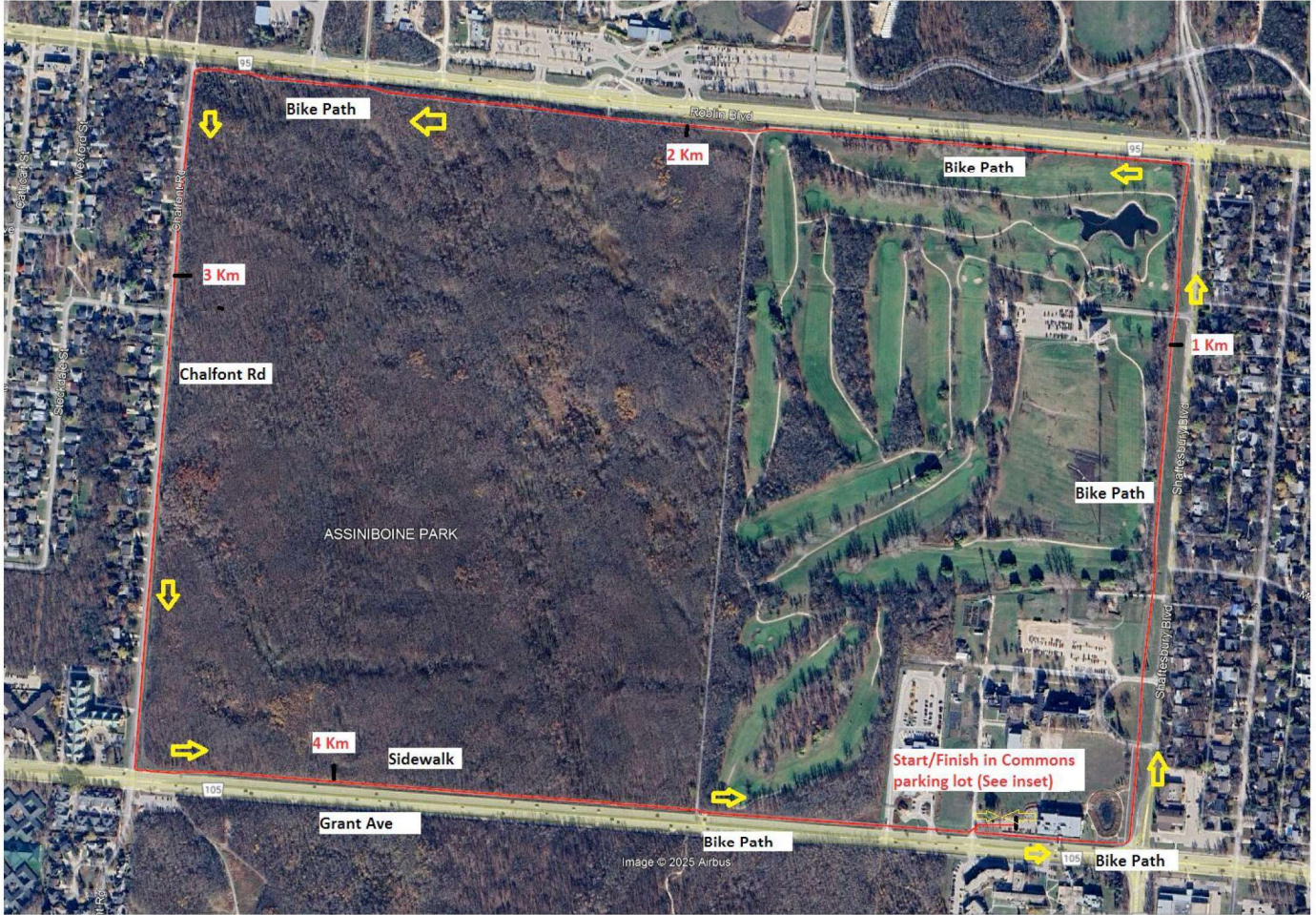


Twosome Relay 5 Km
Winnipeg, Mb



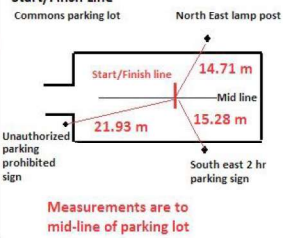
Course Route:

- Start west bound in parking lot
- Turn left at parking lot exit (South)
- Turn left onto bike path (East)
- Turn left staying on path at first intersection (North)
- Turn left staying on path at Roblin intersection (West)
- Turn left onto Chalfont Rd (South)
- Turn left onto sidewalk at Grant Ave (East)
- Merge onto bike path at trail intersection (East)
- Turn left at parking lot exit and veer right to finish (East)

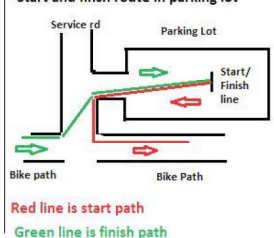
Km Splits:

- Start/Finish: On midline of parking lot. 21.93 m east of Unauthorised Parking Prohibited. 14.71 m SW of lamp post at NE corner of lot
- 1 Km: 40.5 m south of Tuxedo Golf club entrance
- 2 Km: At Assiniboine Park 500 m sign
- 3 Km: At north edge of house at 260 Chalfont
- 4 Km: 22 m west of "Hickling" bench

Start/Finish Line



Start and finish route in parking lot



Athletics Canada Certified
MB-2025-008-LJJL
Certification Expires Dec 31 2033